

## QUESITI PROVA COLLOQUIO

AVVISO PUBBLICO PER L'ASSUNZIONE A TEMPO DETERMINATO DI N. 2 RISORSE NEL PROFILO DI RICERCATORE SANITARIO, CATEGORIA DS, PER LAUREATI IN BIOINFORMATICA, INGEGNERIA INFORMATICA, INGEGNERIA BIOMEDICA, DATA SCIENCE O TITOLO EQUIPOLLENTE O EQUIPARATO AI SENSI DELLA LEGGE DA ASSEGNARE AL DIPARTIMENTO DI RICERCA E TECNOLOGIE AVANZATE DELL'ISTITUTO REGINA ELENA (IRE).

### Domande Tecniche

- 1) Il sequenziamento di tutto l'esoma (WES) è una tecnica di sequenziamento del genoma che consente di identificare le mutazioni genetiche in tutti i geni codificanti delle proteine. Quale è il vantaggio principale del WES rispetto al sequenziamento del genoma completo (WGS)?
- 2) L'analisi di trascrizione a livello di singola cellula (scRNA-seq) è una tecnica di trascrittomica che consente di misurare l'espressione genica di singole cellule. Quando è preferibile utilizzare scRNA-seq rispetto al bulk RNAseq e quali sono le differenze?
- 3) L'analisi di cluster è un metodo statistico che consente di raggruppare insieme le osservazioni che sono simili tra loro. Quale è un'applicazione dell'analisi di cluster in bioinformatica?
- 4) La programmazione di flussi di lavoro (pipeline) è un approccio alla programmazione che consente di automatizzare sequenze di attività. Quale è un vantaggio della programmazione di flussi di lavoro in bioinformatica?

Quesiti estratti:  
n. 4 - 1



Handwritten signatures and initials, including "UP" and "P".

## QUESITI PROVA COLLOQUIO

AVVISO PUBBLICO PER L'ASSUNZIONE A TEMPO DETERMINATO DI N. 2 RISORSE NEL PROFILO DI RICERCATORE SANITARIO, CATEGORIA DS, PER LAUREATI IN BIOINFORMATICA, INGEGNERIA INFORMATICA, INGEGNERIA BIOMEDICA, DATA SCIENCE O TITOLO EQUIPOLLENTE O EQUIPARATO AI SENSI DELLA LEGGE DA ASSEGNARE AL DIPARTIMENTO DI RICERCA E TECNOLOGIE AVANZATE DELL'ISTITUTO REGINA ELENA (IRE).

### Domande informatiche

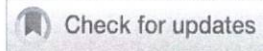
- 1) Quali sono i principali scopi della bioinformatica applicata alla genomica?
- 2) In che modo la bioinformatica viene utilizzata per studiare l'espressione genica?
- 3) In che modo la statistica viene utilizzata in bioinformatica? Ci faccia un esempio
- 4) Quali sono le competenze di programmazione necessarie per un bioinformatico

---

**Quesiti estratti:  
n. 4 - 1**



Several handwritten signatures in black ink, including one that appears to be "CP" and another that looks like "ID".



# Genomic Classification and Individualized Prognosis in Multiple Myeloma

Francesco Maura, MD<sup>1</sup> ; Arjun Raj Rajanna, MSc<sup>1</sup> ; Bachisio Ziccheddu, MSc<sup>1</sup>; Alexandra M. Poos, PhD<sup>2,3</sup>; Andriy Derkach, PhD<sup>4</sup> ; Kylee Maclachlan, MD, PhD<sup>5</sup> ; Michael Durante, MD, PhD<sup>1</sup> ; Benjamin Diamond, MD<sup>1</sup> ; Marios Papadimitriou, MD<sup>1</sup>; Faith Davies, MD<sup>6</sup> ; Eileen M. Boyle, MD<sup>6</sup> ; Brian Walker, PhD<sup>7</sup> ; Malin Hultcrantz, MD, PhD<sup>5</sup> ; Ariosto Silva, PhD<sup>8</sup>; Oliver Hampton, PhD<sup>9</sup>; Jamie K. Teer, PhD<sup>10</sup> ; Erin M. Siegel, PhD<sup>11</sup> ; Niccolò Bolli, MD, PhD<sup>12,13</sup>; Graham H. Jackson, MD, PhD<sup>14</sup> ; Martin Kaiser, MD<sup>15</sup> ; Charlotte Pawlyn, MD, PhD<sup>16</sup> ; Gordon Cook, MD, PhD<sup>17</sup> ; Dickran Kazandjian, MD<sup>1</sup> ; Caleb Stein, PhD<sup>17</sup>; Marta Chesi, PhD<sup>17</sup> ; Leif Bergsagel, MD, PhD<sup>17</sup> ; Elias K. Mai, MD<sup>20</sup> ; Hartmut Goldschmidt, MD<sup>2</sup> ; Katja C. Weisel, MD<sup>18</sup> ; Roland Fenk, MD, PhD<sup>19</sup> ; Marc S. Raab, MD<sup>2,3</sup> ; Fritz Van Rhee, MD, PhD<sup>20</sup> ; Saad Usmani, MD<sup>5</sup> ; Kenneth H. Shain, MD, PhD<sup>8</sup> ; Niels Weinhold, PhD<sup>2,3</sup> ; Gareth Morgan, MD, PhD<sup>6</sup>; and Ola Landgren, MD, PhD<sup>1</sup>

DOI <https://doi.org/10.1200/JCO.23.01277>

## ABSTRACT

**PURPOSE** Outcomes for patients with newly diagnosed multiple myeloma (NDMM) are heterogenous, with overall survival (OS) ranging from months to over 10 years.

**METHODS** To decipher and predict the molecular and clinical heterogeneity of NDMM, we assembled a series of 1,933 patients with available clinical, genomic, and therapeutic data.

**RESULTS** Leveraging a comprehensive catalog of genomic drivers, we identified 12 groups, expanding on previous gene expression–based molecular classifications. To build a model predicting individualized risk in NDMM (IRMMa), we integrated clinical, genomic, and treatment variables. To correct for time-dependent variables, including high-dose melphalan followed by autologous stem-cell transplantation (HDM-ASCT), and maintenance therapy, a multi-state model was designed. The IRMMa model accuracy was significantly higher than all comparator prognostic models, with a c-index for OS of 0.726, compared with International Staging System (ISS; 0.61), revised-ISS (0.572), and R2-ISS (0.625). Integral to model accuracy was 20 genomic features, including 1q21 gain/amp, del 1p, TP53 loss, NSD2 translocations, APOBEC mutational signatures, and copy-number signatures (reflecting the complex structural variant chromothripsis). IRMMa accuracy and superiority compared with other prognostic models were validated on 256 patients enrolled in the GMMG-HD6 (ClinicalTrials.gov identifier: NCT02495922) clinical trial. Individualized patient risks were significantly affected across the 12 genomic groups by different treatment strategies (ie, treatment variance), which was used to identify patients for whom HDM-ASCT is particularly effective versus patients for whom the impact is limited.

**CONCLUSION** Integrating clinical, demographic, genomic, and therapeutic data, to our knowledge, we have developed the first individualized risk-prediction model enabling personally tailored therapeutic decisions for patients with NDMM.

## ACCOMPANYING CONTENT

Data Supplement

Accepted October 23, 2023

Published January 9, 2024

J Clin Oncol 00:1-12

© 2024 by American Society of  
Clinical Oncology



View Online  
Article

Licensed under the Creative  
Commons Attribution 4.0 License

## INTRODUCTION

Clinical outcomes in newly diagnosed multiple myeloma (NDMM) have significantly improved during recent years because of the introduction of novel therapeutic agents.<sup>1,2</sup> However, considerable heterogeneity remains, with a subset of patients only marginally benefitting from newer therapies, reflected in persisting short survival, while others experience decades of disease-free survival even with

limited therapy.<sup>3</sup> Proposed fluorescence in situ hybridization (FISH)–based updates to the International Staging System (ISS) have aimed for a better definition of risk in NDMM.<sup>4-6</sup> Despite some improvements, the application of these models in clinical practice has been limited by several factors, such as (1) there remains considerable patient-to-patient variability within the defined risk groups; (2) they define the relative risk of either progression or death for a group of patients with similar features, but are not developed to

1

2



*[Handwritten signature]*

*[Handwritten signature]*

## CONTEXT

### Key Objective

Is it possible to use genomics to expand biological classification and develop individualized prognostication in multiple myeloma (MM)?

### Knowledge Generated

Leveraging an extensive repository of genomic drivers in a series of 1,933 patients with newly diagnosed MM, we expanded previous fluorescence in situ hybridization and gene expression–based models identifying 12 distinct biological groups. By integrating clinical, genomic, and treatment data and validating with the GMMG-HD6 trial, we created a predictive model for individualized risk in newly diagnosed MM (IRMMa) that demonstrated superior accuracy compared with existing prognostic methods (eg, International Staging System [ISS], revised [R]-ISS, and R2-ISS).

### Relevance (S. Lentzsch)

By integrating 20 highly relevant genomic features, IRMMa allows better identification of primary refractory and early progressive myeloma patients compared to current staging systems such as R-ISS and R2-ISS. IRMMa subsequently boosts overall survival prediction accuracy and could guide clinicians in adjusting for treatment and consolidation strategies.\*

\*Relevance section written by JCO Associate Editor Suzanne Lentzsch, MD, PhD.

2 predict individual patient outcomes; (3) treatment is not included, limiting their ability to inform therapeutic decisions; and (4) they largely ignore several prognostically relevant genomic and time-dependent features.

Recent whole-genome, whole-exome, and targeted sequencing studies have identified a number of recurrent and prognostic genomic features.<sup>7–11</sup> Despite these advances, NDMM is still clinically classified based on FISH and gene expression profiling (GEP) models,<sup>11–13</sup> reflecting difficulties in developing robust clustering and classification approaches that correct for the co-occurrence of different genomic features.<sup>8</sup> In a disease as heterogeneous as multiple myeloma (MM), similar large-scale data integration approaches have the potential to identify distinct groups of patients predicted to benefit from particular treatments (eg, high-dose melphalan followed by autologous stem-cell transplantation [HDM-ASCT]).

In this study, we assembled a large training set (N = 1,933) and a validation set (N = 256) of patients with NDMM with available clinical, demographic, genomics, and therapeutic data, to develop a comprehensive genomic classification of NDMM and to develop, to our knowledge, the first individualized prediction model able to incorporate heterogeneous clinical and genomic information to predict an individual MM patient's response to given treatment options.

## METHODS

Key clinical and genomic features of both the training and the validation set are summarized in the Data Supplement

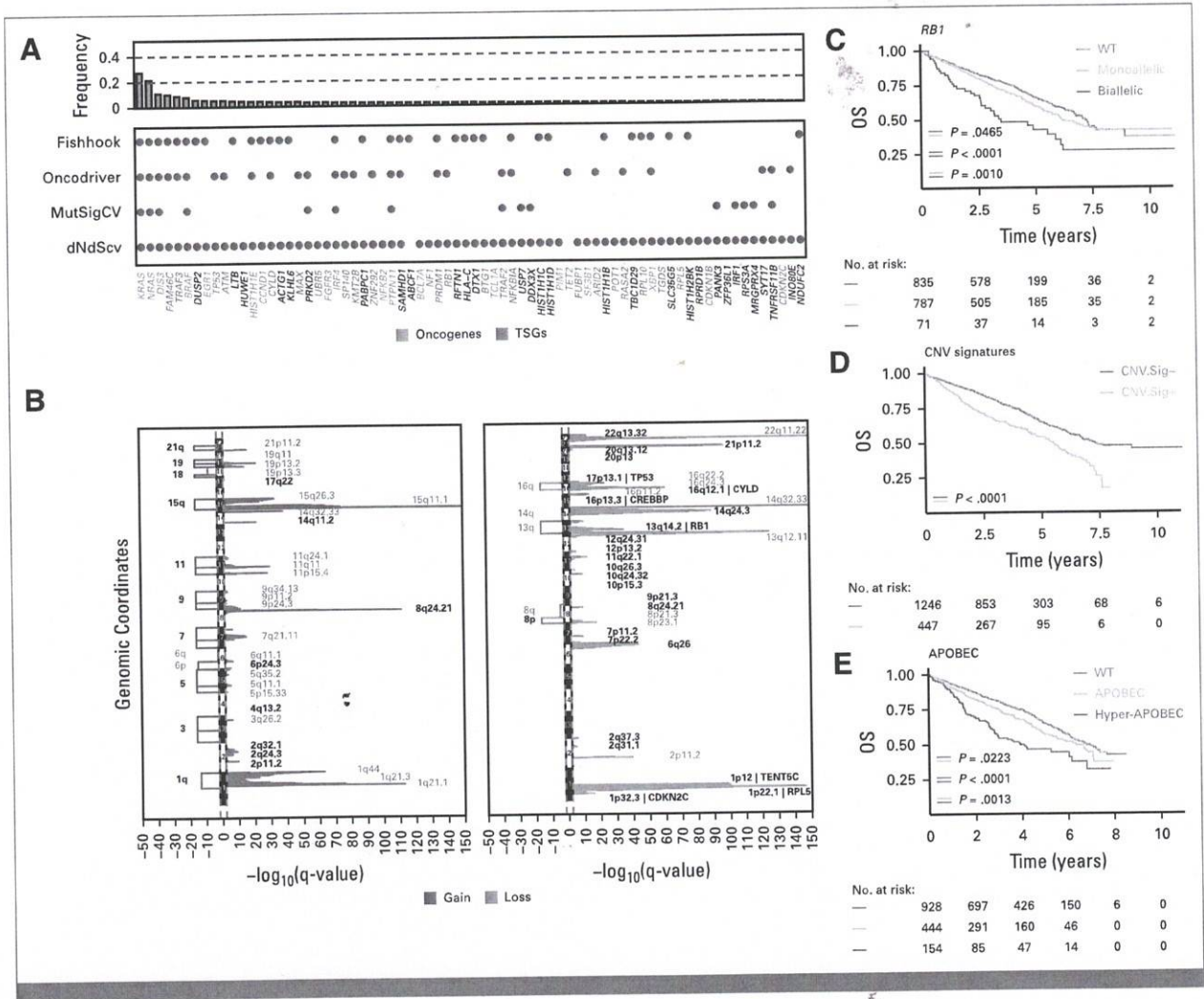
(Table S1 and Fig S1).<sup>11,14,15</sup> The full analytical workflow and codes for the genomic classification and the prediction model for individualized risk in NDMM (IRMMa) are available in the Data Supplement (Methods and Data S1 and S2), and GitHub.<sup>16</sup>

## RESULTS

### MM Genomic Driver Landscape

Across 1,727 (89.3%) NDMM with available single nucleotide variants and indel calls, we identified 90 putative driver genes significantly enriched for nonsynonymous mutations, 10 of which have not been previously reported (Fig 1A; Data Supplement, Tables S2 and S3).<sup>17–20</sup> In line with previous evidence,<sup>8,11</sup> the most frequently mutated driver genes were *KRAS* (24.3%), *NRAS* (20.1%), *DIS3* (9.4%), *TENT5C* (8.6%), *BRAF* (7.8%), and *TRAF3* (6.6%). Seventy-nine percent of patients had at least one nonsynonymous mutation in at least one of the 90 driver genes.<sup>8,11,21,22</sup> Interrogating the copy number variant (CNV) landscape, we found 88 loci recurrently involved by CNV: 34 focal deletions, five large deletions, 30 focal gains, and 19 large gains (Fig 1B; Data Supplement, Tables S2 and S4). Overall, at least one recurrent aneuploidy was observed in 77.8% of cases. Fifty-three percent of the patients had at least two large chromosomal gains on odd-numbered chromosomes and were defined as hyperdiploid (HRD).<sup>23</sup>

CNV analysis and clustering in MM has been historically difficult because large CNVs often affect multiple driver genes and Genomic Identification of Significant Targets in Cancer (GISTIC) peaks, making it harder to identify the



**FIG 1.** Genomic driver landscape in newly diagnosed multiple myeloma. (A) Driver genes significantly involved by single-nucleotide variants and indels using four different driver discovery tools (Fishhook, Oncodriver, MutSigCV, and dNdScv). X-axis label colors represent the COSMIC census annotation for each driver gene: red = oncogenes; blue = TSG; black = unknown. (B) Significant broad and focal copy-number changes detected by GISTIC: red = gain, blue = loss. (C-E) Kaplan-Meier curves for OS according to (C) *RB1* allelic status, (D) presence of chromothripsis-CNV.Sig, and (E) APOBEC activity. CNV.Sig, CNV signature; GISTIC, Genomic Identification of Significant Targets in Cancer; OS, overall survival; TSG, tumor-suppressor genes; WT, wild type.

relevant driver gene and the independence of minimally deleted/gained chromosomal regions.<sup>3,8,11,24-26</sup> To define and correct for dependencies between different CNVs within the same chromosomes and avoid duplicates, we investigated for each GISTIC peak the impact of the CNV size and number of copies (ie, >three copies, here defined as amplification), the relationship with other GISTIC peaks, the impact on GEP, and clinical outcomes (Fig 1C; Data Supplement, Tables S4-S6, Figs S2 and S3, and Data S1). Large (>5 Mb) and focal (<5 Mb) CNV events involving multiple GISTIC peaks on 1q, HRD chromosomes, 8p, 16q, and 13q did not show any major differences compared with the focal, and therefore, different focal GISTIC peaks within each of those chromosomes were aggregated. Among the chromosomal amp, only 1q showed evidence of cumulative CNV effect on GEP.<sup>11,22,27</sup> Overall, 32 tumor suppressor genes (TSG) had biallelic inactivation in 509 (32.8%) patients. Those most recurrently involved by

biallelic events were *TRAF3* (7.9%), *CYLD* (4.7%), *TP53* (3.7%), *RB1* (4.1%), *MAX* (3.8%), *TENT5C* (3.3%), and *CDKN2C* (2.3%). Defining TSG involved by monoallelic and biallelic loss is relevant not only from a cell biology but also from the prognostic standpoint.<sup>3,28,29</sup> In fact, among these events, biallelic loss of *RB1*, *TP53*, and *DNMT3A* were associated with a significantly shorter event-free survival (EFS) and overall survival (OS) when compared with monoallelic events (Data Supplement, Table S6 and Figs S2 and S3).

Chromothripsis is a complex structural variant strongly associated with poor outcome in NDMM.<sup>10</sup> To capture this important feature, we used CNV signatures, described to accurately predict the presence of chromothripsis from both whole exome sequencing (WES) and targeted sequencing data.<sup>7,30</sup> CNV signatures previously associated with chromothripsis were detected in 26.4% of cases and associated

with both shorter EFS and OS (Fig 1D and Data Supplement Fig S2).

To complete our NDMM genomic profiling, we estimated APOBEC mutational signature contribution across patients with WES data ( $n = 1,526$ ; 79%).<sup>9,31,32</sup> Overall, 598 (39%) patients had clear evidence of APOBEC activity (SBS2 and SBS13), with the top 10th percentile (ie, >11%) defined here as hyper-APOBEC ( $n = 154$ ; 10%). Patients with high APOBEC had a significantly worse outcome compared with those without (Fig 1E and Data Supplement Fig S2).<sup>3,22</sup>

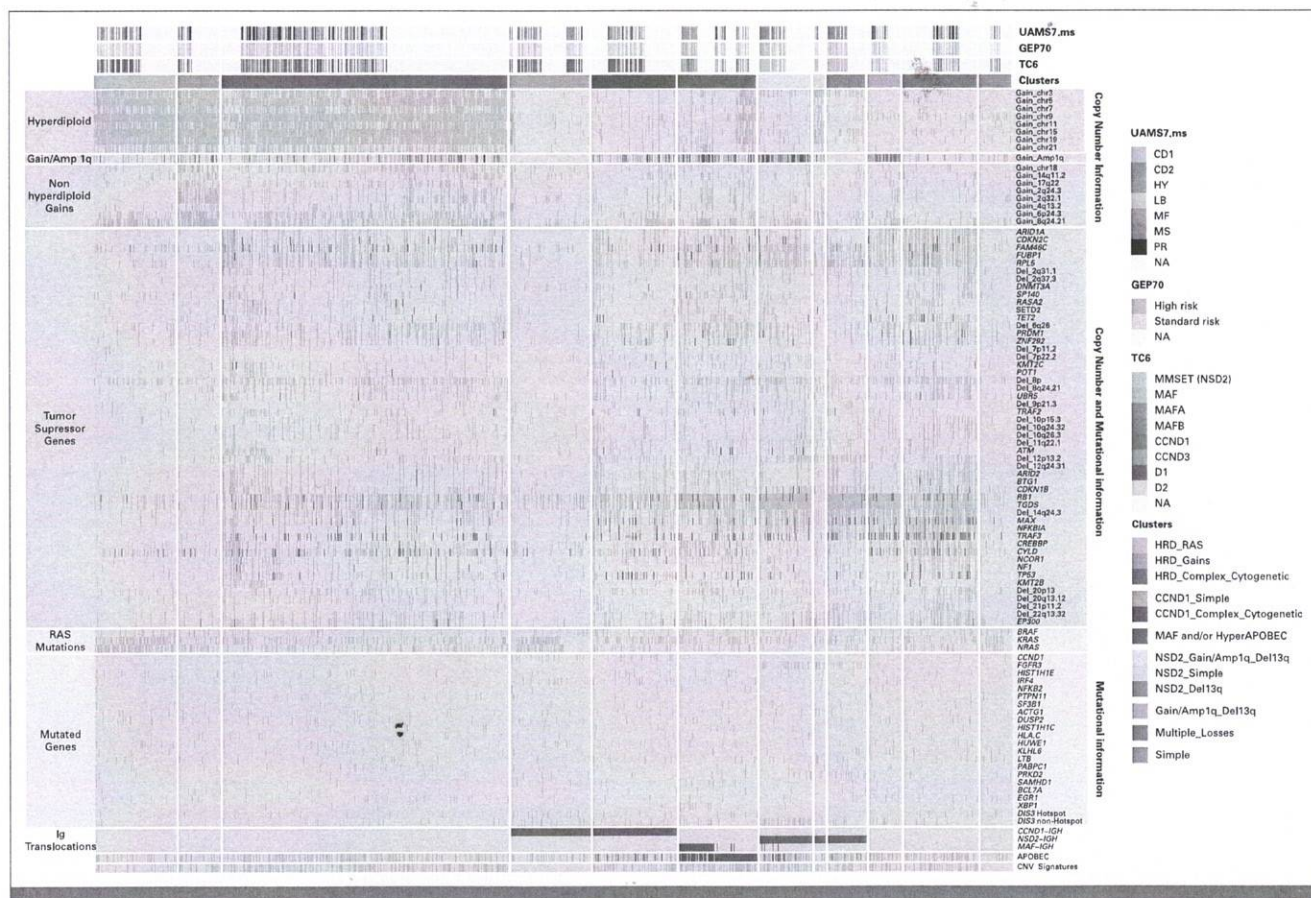
### MM Genomic Classification

Although multiple genomic events and patterns of driver co-occurrence have been reported,<sup>3,8,11,24-26</sup> MM molecular classification has not significantly changed over the past 15 years and still relies on FISH and GEP data (ie, the FISH-translocations and cyclin D [TC] and University of Arkansas for Medical Sciences [UAMS] classifications).<sup>12,13,33-35</sup> This has been mostly driven by the difficulties in integrating different MM genomic drivers into clustering methods that correct for the multiple patterns of co-occurrences known to be common in MM. To address this historical issue, we interrogated 1,434 (74%) patients with available data on all the genomic drivers described and integrated above, implementing three different approaches: (1) pairwise analysis between each single genomic event; (2) higher-level interactions (ie, hierarchical Dirichlet process) combining genomic events with strong patterns of co-occurrence in the pairwise approach; and (3) reporting TSG as wild type, monoallelic, and biallelic loss. Overall, independently of established immunoglobulin translocations and HRD, two additional genomic patterns were observed (Fig 2; Data Supplement, Methods, Figs S4 and S5, and Tables S7 and S8). The first was characterized by the presence of RAS pathway mutations (*NRAS*, *KRAS*, and *BRAF*) and low prevalence/absence of recurrent aneuploidies and biallelic events; the second was mutually exclusive of the first and had a significantly higher prevalence of genomic complexity co-occurring with multiple large deletions, biallelic events, chromothripsis-CNV signatures (CNV.Sig), high APOBEC, and 1q gain/amp. In line with its complex genomic profile, the second group had a shortened OS compared with the first ( $P = .002$ ; Data Supplement, Fig S6A). Integrating these findings into the FISH-TC classification, we were able to divide NDMM into 12 main MM genomic clusters (Fig 2; Data Supplement, Figs S6 and S7, Data S1, and Methods).<sup>12,35</sup> HRD cases without Ig translocations (previously assigned to the D1 and D2 TC groups) were subdivided in three genomic groups. The first, named HRD\_RAS (9%) was characterized by HRD, RAS mutations, and a simple genome lacking multiple aneuploidies. By contrast, the second cluster (HRD\_Complex; 32%) was enriched for aneuploidy and chromothripsis-CNV.Sig. The third group (HRD\_Gains; 4.6%) contained simple genomes, with an absence of RAS mutations and the presence of large gains on chromosomes 2, 4q, 6p, 8q, and 17q. The previous TC1 group, harboring t(11;14), was divided in two: CCND1\_Complex

(9.4%) and CCND1\_Simple (8.9%). In the first, CCND1 translocation co-occurred with several deletions, 1q gain/amp, and chromothripsis-CNV.Sig, reflecting a complex genomic profile. By contrast, CCND1\_Simple had either mutation in the RAS pathway genes, *IRF4*, or a concurrent HRD profile, without features associated with genomic complexity. Interestingly, patients in CCND1\_Simple had better survival compared with those in CCND1\_complex ( $P = .028$ ; Data Supplement, Fig S6B), providing increased resolution of t(11;14) biology, currently considered uniformly low- or intermediate-risk. The previous TC4 group harboring t(4;14) was divided into three: in NSD2\_1q\_13q (5.9%), t(4;14) co-occurring with del13q, 1q gain/amp, and nonhotspot mutations in *DIS3* (ie, D479, D488, and R780),<sup>36</sup> NSD2\_13q (4.3%) had t(4;14) with del13q, but not 1q gain/amp, while in NSD2\_Simple (1.2%), t(4;14) was not associated with either 1q gain/amp or del13q, had large chromosomal gains, but a low-complexity genome. As the co-occurrence of del13q and 1q gain/amp was a high prevalence in the data set and was independent from the simple and complex genomic patterns, an additional genomic cluster was created including patients carrying these two genomic drivers without NSD2 translocations (1q\_13q; 3.6%). Interestingly, while genomically distinct, the outcomes of these four clusters did not differ (Data Supplement, Fig S6C). The previous TC5 group harboring *MAF/MAFB* translocations showed a complex genomic profile associated with high APOBEC. These patients were combined with high APOBEC patients without *MAF/MAFB* translocations, considering the similarities in their overall genomic profile and clinical outcomes (*MAF\_APOBEC*; 8.7%; Data Supplement, Fig S6D). Finally, the remaining cases previously classified as either D1 and D2 without HRD and Ig translocations were divided into two further clusters: one with multiple aneuploidies and chromothripsis-CNV.Sig (Multiple\_Losses; 8.3%) and one with a low complexity genome (Simple; 3.6%). Changes were also correlated with the UAMS GEP-based classification (Data Supplement, Data S1),<sup>13</sup> with the high-risk proliferation (PR) group distributed across two complex groups: HRD\_Complex (54%) and Multiple\_Losses (14%; Data Supplement, Fig S7). Overall, this new genomic classification allowed us to better decipher the clinical and biological heterogeneity seen in comparison with both the TC and UAMS groups.

### IRMMa

After a median follow-up of 43 months, 1,041 (53.8%) patients relapsed, 285 (14.7%) of which occurred during induction (phase I). Overall, 646 (33%) patients died, 483 (24%) of which due to MM. Integrating clinical, demographic, genomic, and treatment data, we developed IRMMa to predict individualized risk for OS and EFS (c-index 0.726 and 0.687, respectively; Figs 3A and 3B; Data Supplement, Methods and Data S2).<sup>37</sup> IRMMa's accuracy was significantly higher than all existing prognostic models: ISS (EFS, 0.563; OS, 0.61), revised (R)-ISS (EFS, 0.539; OS, 0.572), and R2-ISS (EFS, 0.563; OS, 0.625; Figs 3C and 3D; Data Supplement, Fig

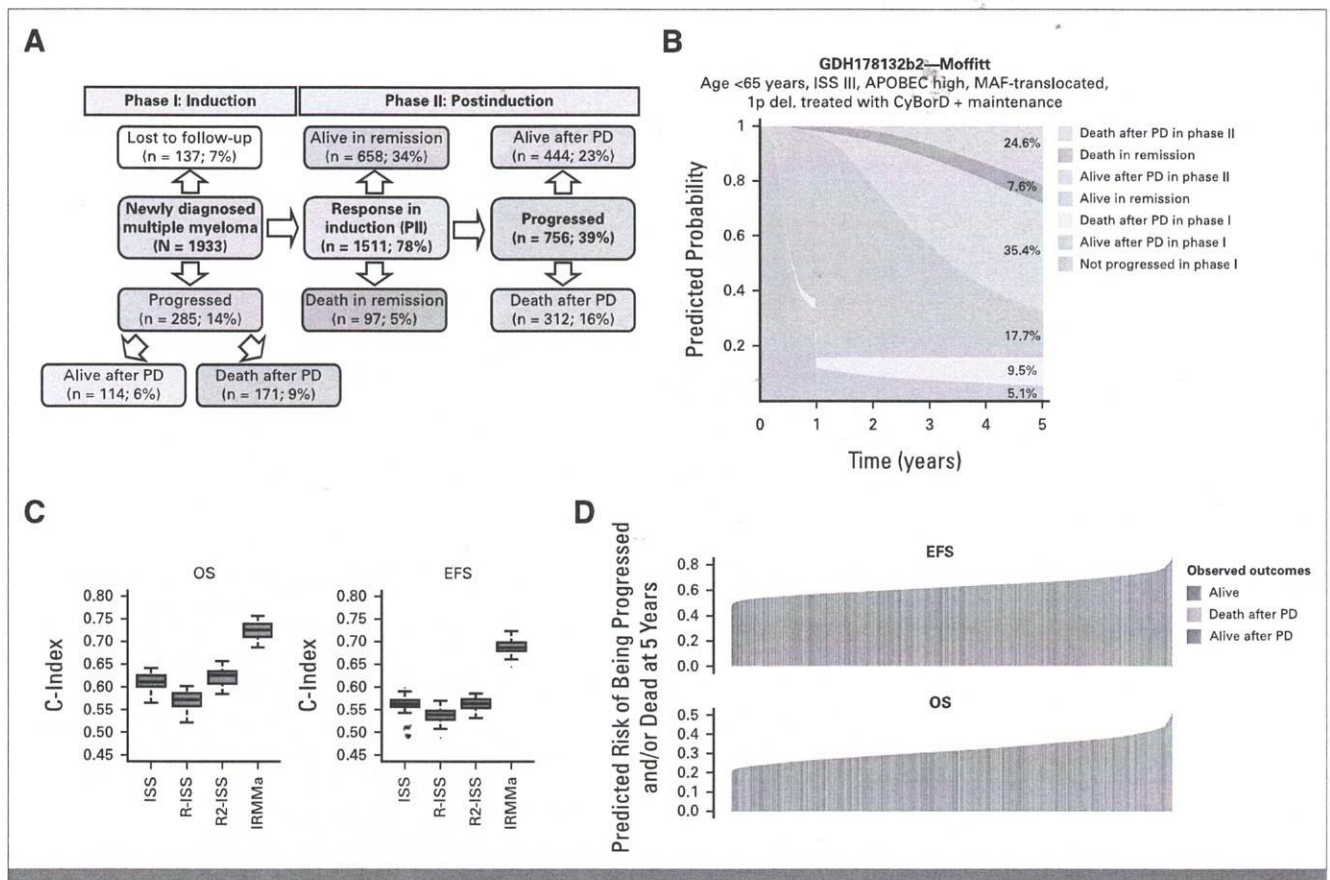


**FIG 2.** Newly diagnosed multiple myeloma genomic classification. The features defining 12 genomic clusters are defined, including GEP70 status, FISH-TC6, UAMS gene expression groups, IGH translocations, and all key mutational, copy number, and structural variant features reported in Figure 1. Gray: wild-type; red: single allele event or APOBEC; brown: biallelic event; hyper-APOBEC; 1q amplification, and IGH canonical translocations.

S8). Among all 132 genomic features tested, we found 20 to improve model accuracy significantly, including 1q21 gain/amp, *TP53* loss, t(4;14; *NSD2*;*IGH*), chromothripsis-CNV.Sig, hyper-APOBEC, and deletions on 1p (Fig 4A; Data Supplement, Fig S9 and Table S9). Genomics emerged as important in predicting patients who progressed during the induction (ie, refractory NDMM) and significantly boosted accuracy for OS. Among the different clinical features tested, age and ISS were the most important for the model accuracy. By contrast, the impact of sex, Eastern Cooperative Oncology Group, race, and lactate dehydrogenase (LDH) was limited. The first-line treatment choice emerged as a key determinant of risk, suggesting that effective therapies may modify the risk associated with clinical and genomic variables and may thus have a different impact in the context of individual patients (Data Supplement, Fig S9). Importantly, because IRMMa was built as a multistate model, we could integrate and quantify the impact of time-dependent features such as HDM-ASCT and maintenance/continuous treatment. This is a key methodologic improvement compared with previous models,<sup>4,5</sup> allowing to correct and quantify the clinical impact of these two postinduction treatments. In

line with the most recent literature,<sup>38-42</sup> HDM-ASCT and maintenance/continuous treatment had a major impact on EFS in phase II and a smaller one on OS in phase II (Fig 4A; Data Supplement, Figs S9, S10A and S10B). Overall, these data demonstrate the importance of including genomic and treatment features in predicting NDMM patients' OS and EFS, respectively. As a representative example, a patient with a low-risk genomic profile may experience short EFS because of a lack of exposure to effective therapy for their particular disease subset. OS for the same patient may, however, not be affected because of the impact of varying and potentially more effective subsequent therapies. By contrast, a patient with a high-risk genomic profile was generally resistant to most therapies, reflecting both short EFS and OS.

Although the inclusion of each feature improved the model, IRMMa has been developed as a flexible tool able to predict outcomes with incomplete data. Specifically, because genomic profiling is only rarely performed in the current clinical practice for NDMM, IRMMa performances were tested without genomic data. Despite



**FIG 3.** IRMMa. (A) Multistate model of a patient with NDMM. The six colored shapes correspond to different stages across the two phases (phase I: induction and phase II: postinduction), with different possible transitions (arrows). The number and percentage in each shape corresponds to the total number of patients who entered during the study follow-up. Among lost to follow-up in phase I group, 66/137 (48%) died in phase I for other causes. IRMMa was developed using NCNPH. (B) Sediment plot showing the risk over time for a single patient with NDMM from diagnosis to 5 years. The patient's clinical and genomic profile was predicted as high risk with a predicted probability to be alive and in remission of 17.7% in line with the clinical and genomic high-risk presentation. (C) Boxplots comparing c-index for ISS, R-ISS, R2-ISS, and IRMMa for OS and EFS. Boxplots are generated using stratified cross-validation (5-fold  $\times$  10-random-repeats = 50 splits). As expected, R-ISS showed a lower accuracy than ISS and R2-ISS. This is because R-ISS was developed with a focus on high sensitivity, which means it is good at identifying patients with high-risk NDMM. However, this focus on sensitivity comes at the cost of specificity, which means that it is more likely to incorrectly classify high- and intermediate-risk patients as intermediate- and low-risk, respectively. (D) Model performance comparing predicted risk of progression (EFS) or death (OS) and observed (ie, bar colors). EFS, event-free survival; IRMMa, individualized prediction model for newly diagnosed multiple myeloma; ISS, International Staging System; NCNPH, neural Cox nonproportional hazards; NDMM, newly diagnosed multiple myeloma; OS, overall survival; PD, progression disease; R-ISS, revised international staging system.

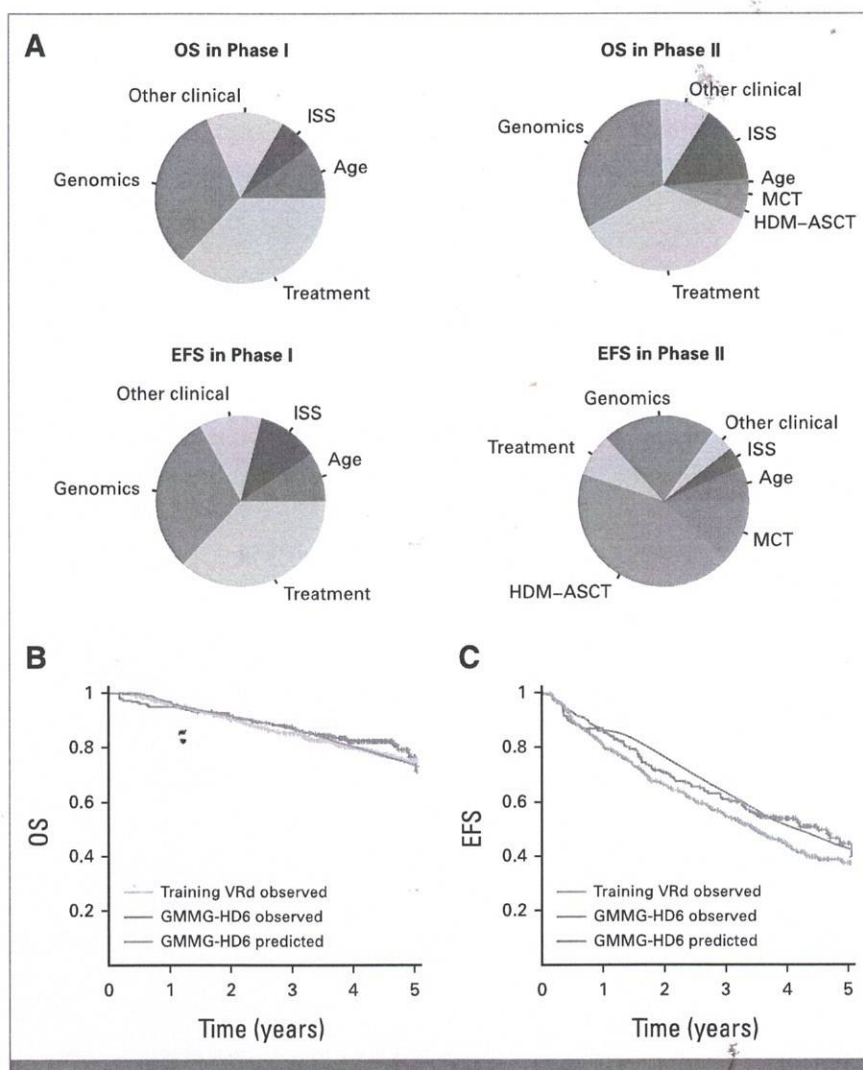
this, IRMMa still outperformed ISS, R-ISS, and R2-ISS with OS and EFS (Fig 3C; Data Supplement, Figs S10C and S10D).

Finally, the IRMMa model performance was validated on the 256 patients enrolled in the GMMG-HD6 trial with available genomic data. Overall, IRMMa showed a higher accuracy for EFS and OS compared with ISS, R-ISS, and R2-ISS in predicting clinical outcomes (Data Supplement, Data S2). Furthermore, to validate the model accuracy, we leveraged IRMMa as a knowledge bank<sup>43</sup> to predict outcomes in the GMMG-HD6 cohort, observing high concordance between predicted risks and observed outcomes (OS and EFS c-index 0.65 and 0.58, respectively; Figs 4B and 4C).

### Treatment Variance in NDMM

As a key innovation compared with other prognostic models for NDMM,<sup>4,6,41</sup> IRMMa also allows prediction of the risk for each state according to which therapy is administered, after correction for key genomic and clinical features. Specifically, we identified eight induction strategies in our series, on the basis of immunomodulatory agents (IMiDs), proteasome inhibitors (PIs), and chemotherapy (eg, cyclophosphamide, low-dose melphalan, platinum-based regimens), and four possible postinduction strategies: observation, HDM-ASCT, HDM-ASCT + maintenance/continuous treatment, and maintenance/continuous treatment without HDM-ASCT, for a total of 32 possible treatment courses. The risk of not having progressed and/or being dead at 5 years

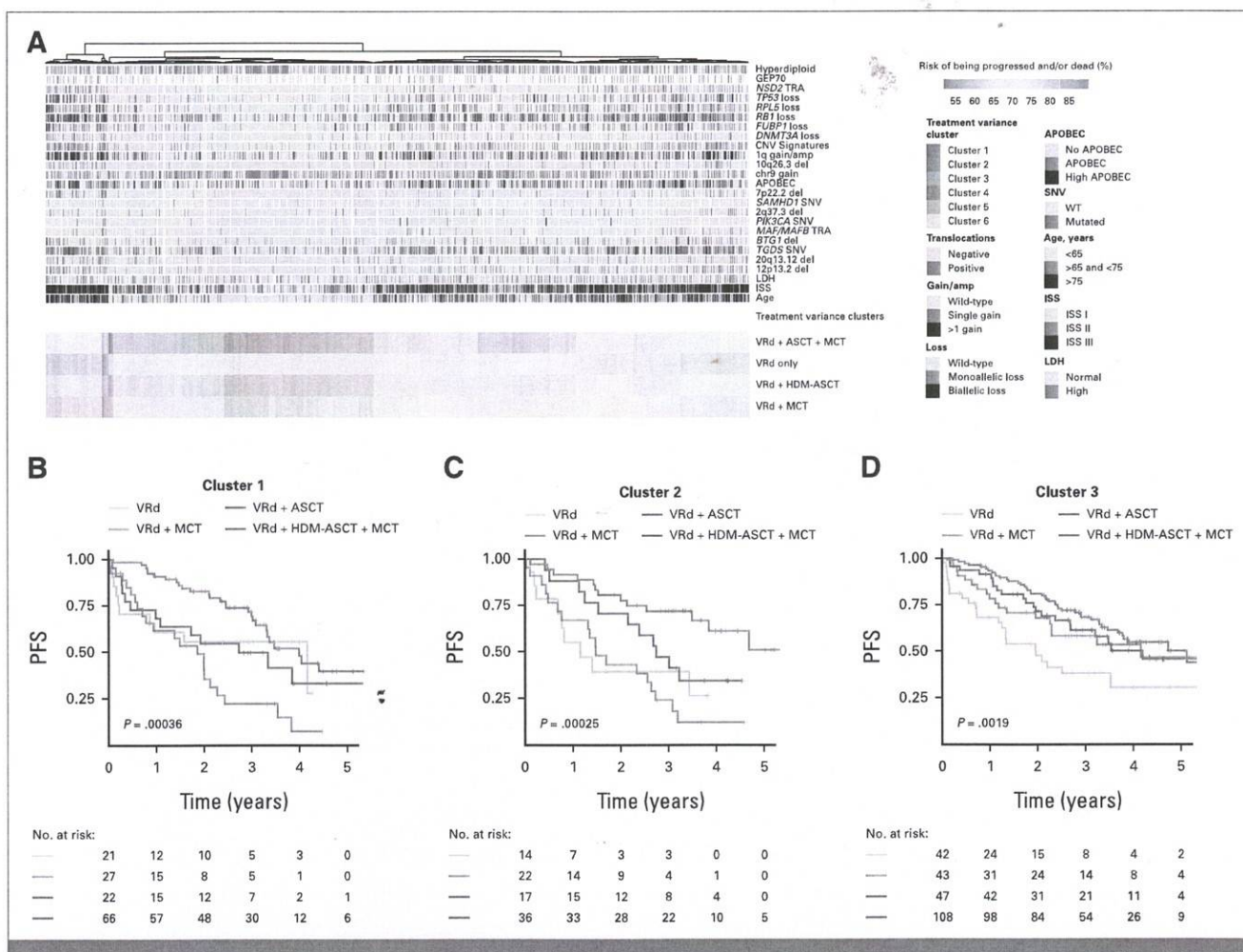




**FIG 4.** IRMMa anatomy. (A) The relative weight of age, ISS, genomics, treatment, other clinical (ie, ECOG, sex, race, and LDH level), HDM-ASCT, and maintenance/continuous treatment on our prediction model (IRMMa) for each of the multistate phase. (B and C) Predicted and observed outcome for the GMMG-HD6 cohort. The observed clinical outcome for patients included in the training treated with VRd + HDM-ASCT + MCT was also included. ECOG, Eastern Cooperative Oncology Group; HDM-ASCT, high-dose melphalan followed by autologous stem-cell transplantation; IRMMa, individualized prediction model for newly diagnosed multiple myeloma; ISS, International Staging System; LDH, lactate dehydrogenase; MCT, maintenance/continuous treatment; VRd, bortezomib, lenalidomide, and dexamethasone.

(progression-free survival [PFS]) was predicted for each patient in each possible treatment course. The PFS difference between courses within the same patient was defined as treatment variance. To evaluate meaningful patterns in the context of the current therapeutic landscape, we explored the impact of HDM-ASCT and maintenance/continuous treatment after induction with bortezomib, lenalidomide, and dexamethasone (VRd; Fig 5A; Data Supplement, Table S10).<sup>42</sup> Integrating predicted outcomes and treatment variance for all four possible treatment combinations (ie, VRd ± HDM-ASCT ± maintenance/continuous treatment), we identified six main clusters. In cluster 1 (n = 554), the intensive combination of HDM-ASCT

plus maintenance/continuous treatment was effective in converting unfavorable outcomes into favorable ones (Fig 5B). In cluster 2 (n = 476), patients had a high treatment variance with significant benefit from receiving HDM-ASCT and a relatively small advantage in receiving maintenance/continuous treatment (Fig 5C). In cluster 3 (n = 717), patients were usually age younger than 65 years with low ISS and low genomic complexity. In line with this presentation, any consolidation strategy provided an advantage, with no significant difference between HDM-ASCT and other maintenance/continuous treatments (Fig 5D). The other three groups included a smaller number of patients, with cluster 4 (n = 13) associated with favorable



**FIG 5.** Predicted treatment variance in patients with newly diagnosed multiple myeloma treated with VRd. (A) Heatmap showing the predicted treatment variance across 1,933 patients in case of treatment with VRd ± HDM-ASCT ± MCT. (B-D) Observed probability to be alive and in remission (PFS) across the treatment variance groups defined in (A). To correct for HDM-ASCT and maintenance/continuous treatment, time was calculated from the end of induction to the last follow up (ie, phase II). Statistical differences between all different treatment groups within each cluster was estimated by log-rank test and reported in the Data Supplement (Table S10). HDM-ASCT, high-dose melphalan followed by autologous stem-cell transplantation; IRMMa, individualized prediction model for newly diagnosed multiple myeloma; ISS, International Staging System; LDH, lactate dehydrogenase; MCT, maintenance/continuous treatment; PFS, progression-free survival; SNV, single nucleotide variant; VRd, bortezomib, lenalidomide, and dexamethasone; WT, wild type.

outcomes independent of the postinduction strategy. Cluster 5 (n = 155) was enriched for patients with high-risk genomic and clinical features, and poor outcomes, partially improved by HDM-ASCT. Clusters 6 (n = 18) included a small number of patients with aggressive clinical and genomic features and limited treatment variance. Patients enrolled in the GMMG-HD6 were mostly assigned to clusters 1 and 3, suggesting that a fraction of patients might have had favorable outcome even without HDM-ASCT (Data Supplement, Fig S11).

There were significant differences in treatment variance among the 12 genomic groups, with each having predictable sensitivity to different therapies (Fig 2; Data Supplement, Figs S12 and S13 and Table S11). Specifically, groups with less complex genomes (HRD\_RAS, HRD\_Gains, CCND1\_Simple, and Simple) tended to be grouped in cluster 3, suggesting

high sensitivity to VRd with and without HDM-ASCT. CCND1\_Complex, HRD\_Complex, and Complex were mostly divided between cluster 1 and cluster 3. NSD2\_HRD, MAF\_APOBEC, and 1q\_13q were divided across cluster 1 and cluster 2. Finally, NSD2\_1q\_del13q, and NSD2\_13q were mostly in cluster 2 and cluster 5, suggesting potential sensitivity to intensification with HDM-ASCT.

IRMMa is available for estimating individualized risk and treatment variance of NDMM as an online tool for the research community (IRMMa Risk Calculator<sup>44</sup>).

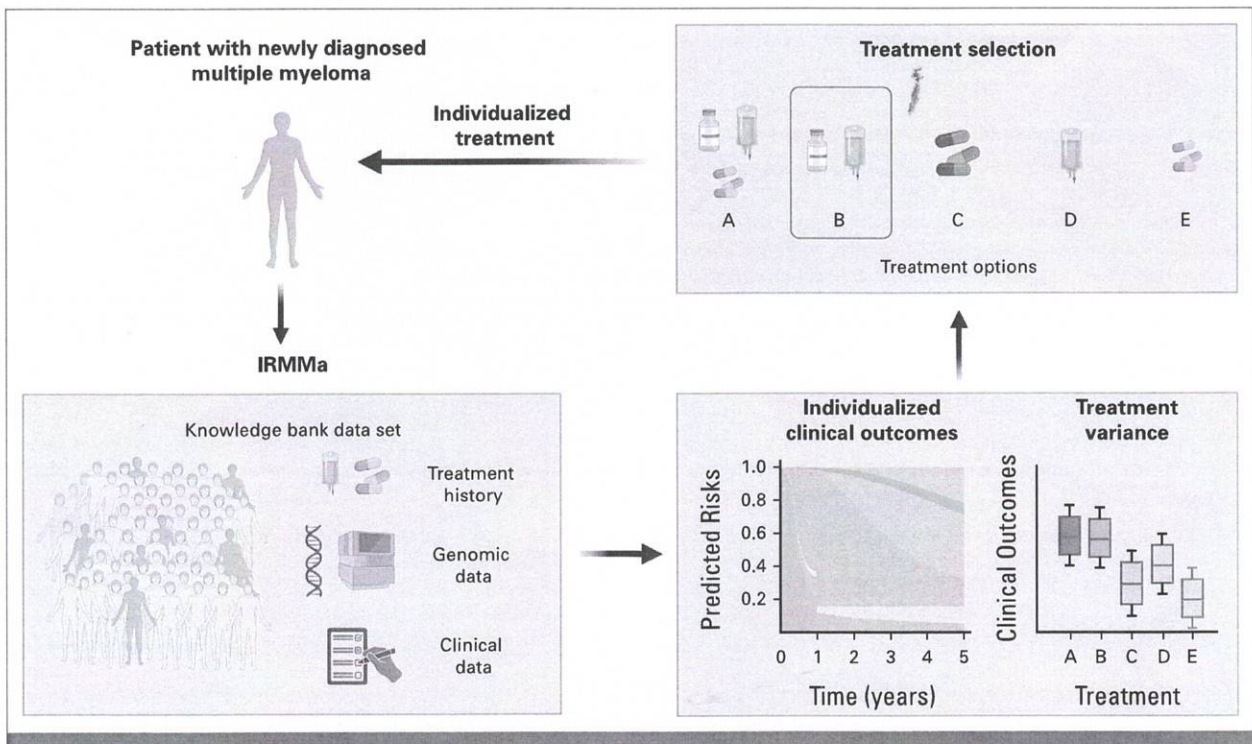
## DISCUSSION

In this study, we leveraged a large and diverse data set of patients with NDMM to identify key genomic drivers and

propose a more comprehensive genomic classification able to better capture heterogeneity among defined molecular subgroups creating opportunities to better decipher clinical heterogeneity and treatment sensitivity.<sup>12,13,34,35</sup> Compared with recent efforts,<sup>3,8,11,24-26</sup> our study has three key advantages: (1) the larger sample size; (2) the analytical workflow that takes into account more genomic drivers, multiple confounders, and patterns of co-occurrence, which were partially overlooked in previous works; and (3) unlike previous efforts that primarily focus on individual driver events, our new classification system emphasizes the examination of genomic patterns of co-occurrence (eg, complex v simple).

Although recently proposed prognostic models, such as R-ISS and R2-ISS, can identify a subgroup of high-risk patients,<sup>4,41</sup> they are not corrected for different treatment approaches and are not designed to predict patient-level individual risk. Integrating key features defined in our genomic classification together with clinical, demographic, and treatment data, we leveraged deep neural networks to develop, to our knowledge, the first prediction model for individualized risk in NDMM patient outcomes (ie, IRMMa). Compared with previous prognostic models, IRMMa has several key advantages. First, IRMMa integrates genomic features selected according to their prognostic relevance when corrected for clinical, demographic, and treatment features. The inclusion of 20 highly relevant genomic features significantly improves the IRMMa ability to identify primary refractory and early progressive patients and boosts accuracy for OS, confirming the need for expanded

genomic characterization in NDMM prognostication. Second, IRMMa allows the estimation of the risk of progression or death for an individual patient with NDMM, adjusting for treatment and consolidation strategies. HDM-ASCT and maintenance/continuous treatment have been shown to significantly improve EFS,<sup>38,40-42</sup> but because of their time-dependent nature, they have never been considered in the development of previous prognostic models (R-ISS and R2-ISS). The IRMMa multistate design allowed the inclusion of these features, improving the overall accuracy for EFS. Furthermore, the ability to capture each patient's specific treatment variance represents a critical tool that can help to select the most effective therapy and to avoid overtreatment where it adds little to no benefit. Of relevance, IRMMa can be relevant for identifying patients who do, or do not, benefit from HDM-ASCT. Several randomized phase III trials have explored the advantage of HDM-ASCT as a consolidation strategy after IMiDs and/or PIs.<sup>38,40,42,45,46</sup> In most studies, HDM-ASCT has been associated with an advantage in PFS overall, but not in OS. These observations raise clinically important questions on how to counsel patients with NDMM, particularly in the future era of novel effective immunotherapies. Finally, the implementation of IRMMa necessitates the inclusion of ISS, age, and treatment as mandatory features. Thus, even with a reduced concordance rate, IRMMa has the capability to generate estimates even in the absence of genomic data, surpassing the predictive accuracy of R2-ISS, R-ISS, and ISS, presenting an opportunity to improve predictions without the availability of comprehensive genomics.



**FIG 6.** Figure summarizing IRMMa potential integration into clinical applications. The figure was generated using BioRender. IRMMa, individualized prediction model for newly diagnosed multiple myeloma.

Downloaded from ascopubs.org by 193.204.108.2 on January 29, 2024 from 193.204.108.002 Copyright © 2024 American Society of Clinical Oncology. All rights reserved.



Overall, IRMMa has some limitations: (1) the sample size used in the training set was smaller than the one used to develop R-ISS and R2-ISS; (2) IRMMa was built using genomic data from a single bone marrow site and does not consider the potential impact of genomic drivers at different anatomic sites (ie, spatial heterogeneity).<sup>47,48</sup> Future integration of bone marrow and liquid biopsy approaches might further improve IRMMa's performances and resolution. (3) Finally, the current IRMMa model cannot provide estimates for new agents (eg, anti-CD38 antibodies) and distinct time-dependent features (eg, minimal residual disease), as these data are not

available for sufficiently large cohorts yet. However, in contrast to other models, such as the R-ISS, IRMMa has been built as a flexible and knowledge-driven model that can be grown over time by integrating additional genomic drivers, novel treatments, and their effect on treatment variance (Fig 6).

In conclusion, IRMMa represents an innovative opportunity to better investigate the heterogeneity of patients with NDMM, which is currently oversimplified, to improve our understanding of outcomes in both previous and future clinical trials.

## AFFILIATIONS

<sup>1</sup>Myeloma Division, Sylvester Comprehensive Cancer Center, University of Miami, Miami, FL

<sup>2</sup>Heidelberg Myeloma Center, Department of Medicine V, University Hospital Heidelberg, Heidelberg, Germany

<sup>3</sup>Clinical Cooperation Unit (CCU) Molecular Hematology/Oncology, German Cancer Research Center (DKFZ), Heidelberg, Germany

<sup>4</sup>Department of Epidemiology and Biostatistics, Memorial Sloan Kettering Cancer Center, New York, NY

<sup>5</sup>Myeloma Service, Department of Medicine, Memorial Sloan Kettering Cancer Center, New York, NY

<sup>6</sup>Myeloma Research Program, New York University Langone, Perlmutter Cancer Center, New York, NY

<sup>7</sup>Division of Hematology Oncology, Melvin and Bren Simon Comprehensive Cancer Center, Indiana University, Indianapolis, IN

<sup>8</sup>Department of Malignant Hematology, Moffitt Cancer Center, Tampa, FL

<sup>9</sup>Aster Insights, Tampa, FL

<sup>10</sup>Department of Biostatistics & Bioinformatics, Moffitt Cancer Center & Research Institute, Tampa, FL

<sup>11</sup>Department of Cancer Epidemiology, Moffitt Cancer Center, Tampa, FL

<sup>12</sup>Hematology Unit, Fondazione IRCCS Ca' Granda Ospedale Maggiore Policlinico, Milan, Italy

<sup>13</sup>Department of Oncology and Onco-Hematology, University of Milan, Milan, Italy

<sup>14</sup>Freeman Hospital, The Newcastle Upon Tyne Hospitals NHS Foundation Trust, Newcastle, United Kingdom

<sup>15</sup>The Institute of Cancer Research, London, United Kingdom

<sup>16</sup>Leeds Cancer Research UK Clinical Trials Unit, Leeds Institute of Clinical Trials Research, University of Leeds, Leeds, United Kingdom

<sup>17</sup>Division of Hematology/Oncology, Mayo Clinic Arizona, Scottsdale, AZ, USA

<sup>18</sup>Department of Oncology, Hematology and Blood and Marrow Transplant, University Medical Center Hamburg-Eppendorf, Hamburg, Germany

<sup>19</sup>Department of Hematology, Oncology and Clinical Immunology, University-Hospital Duesseldorf, Duesseldorf, Germany

<sup>20</sup>Myeloma Institute for Research & Therapy, University of Arkansas for Medical Sciences, Little Rock, AR

## CORRESPONDING AUTHOR

Francesco Maura, MD, Division of Myeloma, Department of Medicine, Sylvester Myeloma Institute, Sylvester Comprehensive Cancer Center, Don Soffer Clinical Research Center, University of Miami, 1120 NW, 14th St, Clinical Research Bldg, Room 833, Miami, FL 33136; e-mail: fxm557@med.miami.edu.

## EQUAL CONTRIBUTION

F.M., A.R.R., B.Z., and A.M.P. contributed equally to this work. S.U., K.H.S., N.W., G.M., and O.L. contributed equally to this work.

## PRIOR PRESENTATION

Presented in part at the American Society of Hematology 2022 Annual Conference, New Orleans, LA, December 9-13, 2022.

## SUPPORT

Supported by the Myeloma Solutions Fund, Paula and Rodger Riney Multiple Myeloma Research Program Fund, the Tow Foundation, Sylvester Comprehensive Cancer Center National Cancer Institute (NCI) Core Grant (P30 CA 240139), Memorial Sloan Kettering Cancer Center NCI Core Grant (P30 CA 008748), and NYU NCI Core Grant (P30CA016087). This research was made possible through the Oncology Research Information Exchange Network Avatar Project in collaboration with Aster Insights (Formerly known as M2Gen), the Total Cancer Care protocol at the H. Lee Moffitt Cancer Center & Research Institute, an NCI-designated Comprehensive Cancer Center (P30-CA076292). F.M. is supported by the American Society of Hematology (ASH), Leukemia & Lymphoma Society, and by International Myeloma Society. G.M. received grant support through a Translational Research Program award from the Leukemia & Lymphoma Society (6020-20). N.B. is supported by the Italian Association for Cancer Research (AIRC Investigator Grant no. 25739). K.M. received grant support from the Royal Australasian College of Physicians, the ASH and the Multiple Myeloma Research Foundation. The Heidelberg Myeloma Center thanks the Sample Processing Lab, the High Throughput Sequencing unit of the Genomics and Proteomics Core Facility and the Omics IT and Data Management Core Facility of the German Cancer Research Center (DKFZ), the DKFZ-Heidelberg Center for Personalized Oncology (DKFZ-HIPO) office, the Biobank Multiple Myeloma Heidelberg University Hospital, and the Myeloma Registry for excellent services. Support and funding of the project via the Dietmar-Hopp Foundation and the NCT Heidelberg Molecular Precision Oncology Program (project K08K) is gratefully acknowledged. Data storage service via SDS@hd is supported by the Ministry of Science, Research and the Arts Baden-Württemberg (MWK) and the German Research Foundation (DFG) through grants INST 35/1314-1 FUGG and INST 35/1503-1 FUGG.

## AUTHORS' DISCLOSURES OF POTENTIAL CONFLICTS OF INTEREST

Disclosures provided by the authors are available with this article at DOI <https://doi.org/10.1200/JCO.23.01277>.

## DATA SHARING STATEMENT

CoMMpass genomic data are available on dbGap: phs000748.v1.p1. UAMS genomic data are available on EGA: EGAS00001003223. The MGP data set is available in the European Genome-Phenome Archive under accession numbers EGAS00001001147, EGAS00001000036, and EGAS00001002859. Memorial Sloan Kettering Cancer Center myType: European Variation Archive with accession numbers PRJEB31370 (project) and ERZ807140 (analyses). AVATAR—Moffitt: Requests for access to the data used in this study can be submitted here at <https://researchdatarequest.orienavatar.com/>. GMMG-HD6: genomic data will be available on EGA EGAS00001007469. All R and Python codes used for this study can be found in the Data Supplement (Data S1 and S2) and on GitHub: [https://github.com/UM-Myeloma-Genomics/GCP\\_MM](https://github.com/UM-Myeloma-Genomics/GCP_MM).

## AUTHOR CONTRIBUTIONS

**Conception and design:** Francesco Maura, Arjun Raj Rajanna, Kenneth H. Shain, Gareth Morgan, Ola Landgren, Bachisio Ziccheddu, Saad Usmani, Niels Weinhold

**Financial support:** Francesco Maura, Kenneth H. Shain, Ola Landgren

**Administrative support:** Francesco Maura, Saad Usmani, Kenneth H. Shain, Ola Landgren

**Provision of study materials or patients:** Francesco Maura, Kylee Maclachlan, Eileen M. Boyle, Brian Walker, Malin Hultcrantz, Ariosto

Silva, Erin M. Siegel, Charlotte Pawlyn, Gordon Cook, Elias K. Mai, Fritz Van Rhee, Saad Usmani, Kenneth H. Shain, Niels Weinhold, Gareth Morgan, Ola Landgren

**Collection and assembly of data:** Francesco Maura, Alexandra M. Poos, Kylee Maclachlan, Faith Davies, Eileen M. Boyle, Ariosto Silva, Jamie K. Teer, Erin M. Siegel, Charlotte Pawlyn, Elias K. Mai, Roland Fenk, Fritz Van Rhee, Saad Usmani, Kenneth H. Shain, Niels Weinhold, Gareth Morgan, Ola Landgren

**Data analysis and interpretation:** Francesco Maura, Arjun Raj Rajanna, Bachisio Ziccheddu, Alexandra M. Poos, Andriy Derkach, Michael Durante, Benjamin Diamond, Marios Papadimitriou, Faith Davies, Brian Walker, Malin Hultcrantz, Niccolò Bolli, Gordon Cook, Dickran Kazandjian, Caleb Stein, Leif Bergsagel, Elias K. Mai, Roland Fenk, Saad Usmani, Kenneth H. Shain, Niels Weinhold, Gareth Morgan, Ola Landgren

**Manuscript writing:** All authors

**Final approval of manuscript:** All authors

**Accountable for all aspects of the work:** All authors

## ACKNOWLEDGMENT

The Moffitt team would like to acknowledge the Pentecost Myeloma Research Center, the Non-Therapeutic Research Office team, Pharmacokinetics and Pharmacodynamics Core, and Tissue Core.

## REFERENCES

- Paquin AR, Kumar SK, Buadi FK, et al: Overall survival of transplant eligible patients with newly diagnosed multiple myeloma: Comparative effectiveness analysis of modern induction regimens on outcome. *Blood Cancer J* 8:125, 2018
- Thorsteinsdottir S, Dickman PW, Landgren O, et al: Dramatically improved survival in multiple myeloma patients in the recent decade: Results from a Swedish population-based study. *Haematologica* 103:e412-e415, 2018
- Walker BA, Mavrommatis K, Wardell CP, et al: A high-risk, Double-Hit, group of newly diagnosed myeloma identified by genomic analysis. *Leukemia* 33:159-170, 2019
- D'Agostino M, Cairns DA, Lahuerta JJ, et al: Second revision of the International Staging System (R2-ISS) for overall survival in multiple myeloma: A European Myeloma Network (EMN) report within the HARMONY project. *J Clin Oncol* 40:3406-3418, 2022
- Palumbo A, Avet-Loiseau H, Oliva S, et al: Revised International Staging System for multiple myeloma: A report from International Myeloma Working Group. *J Clin Oncol* 33:2863-2869, 2015
- Perrot A, Lauwers-Cances V, Tournay E, et al: Development and validation of a cytogenetic prognostic index predicting survival in multiple myeloma. *J Clin Oncol* 37:1657-1665, 2019
- Maclachlan KH, Rustad EH, Derkach A, et al: Copy number signatures predict chromothripsis and clinical outcomes in newly diagnosed multiple myeloma. *Nat Commun* 12:5172, 2021
- Maura F, Bolli N, Angelopoulos N, et al: Genomic landscape and chronological reconstruction of driver events in multiple myeloma. *Nat Commun* 10:3835, 2019
- Maura F, Petljak M, Lionetti M, et al: Biological and prognostic impact of APOBEC-induced mutations in the spectrum of plasma cell dyscrasias and multiple myeloma cell lines. *Leukemia* 32:1044-1048, 2018
- Rustad EH, Yellapantula VD, Glodzik D, et al: Revealing the impact of structural variants in multiple myeloma. *Blood Cancer Discov* 1:258-273, 2020
- Walker BA, Mavrommatis K, Wardell CP, et al: Identification of novel mutational drivers reveals oncogene dependencies in multiple myeloma. *Blood* 132:587-597, 2018
- Bergsagel PL, Kuehl WM, Zhan F, et al: Cyclin D dysregulation: An early and unifying pathogenic event in multiple myeloma. *Blood* 106:296-303, 2005
- Weinhold N, Heuck CJ, Rosenthal A, et al: Clinical value of molecular subtyping multiple myeloma using gene expression profiling. *Leukemia* 30:423-430, 2016
- Boyle EM, Ashby C, Tytarenko RG, et al: BRAF and DIS3 mutations associate with adverse outcome in a long-term follow-up of patients with multiple myeloma. *Clin Cancer Res* 26:2422-2432, 2020
- Yellapantula V, Hultcrantz M, Rustad EH, et al: Comprehensive detection of recurring genomic abnormalities: A targeted sequencing approach for multiple myeloma. *Blood Cancer J* 9:101, 2019
- UM-Myeloma-Genomics/GCP\_MM: Genomic Classification and Individualized Prognosis in Multiple Myeloma. [https://github.com/UM-Myeloma-Genomics/GCP\\_MM](https://github.com/UM-Myeloma-Genomics/GCP_MM)
- Imielinski M, Guo G, Meyerson M: Insertions and deletions target lineage-defining genes in human cancers. *Cell* 168:460-472 e14, 2017
- Lawrence MS, Stojanov P, Mermel CH, et al: Discovery and saturation analysis of cancer genes across 21 tumour types. *Nature* 505:495-501, 2014
- Martincorena I, Raine KM, Gerstung M, et al: Universal patterns of selection in cancer and somatic tissues. *Cell* 171:1029-1041.e21, 2017
- Mularoni L, Sabarinathan R, Deu-Pons J, et al: OncodriveFML: A general framework to identify coding and non-coding regions with cancer driver mutations. *Genome Biol* 17:128, 2016
- Lohr JG, Stojanov P, Carter SL, et al: Widespread genetic heterogeneity in multiple myeloma: Implications for targeted therapy. *Cancer Cell* 25:91-101, 2014
- Walker BA, Boyle EM, Wardell CP, et al: Mutational spectrum, copy number changes, and outcome: Results of a sequencing study of patients with newly diagnosed myeloma. *J Clin Oncol* 33:3911-3920, 2015
- Fonseca R, Debes-Marun CS, Picken EB, et al: The recurrent IgH translocations are highly associated with nonhyperdiploid variant multiple myeloma. *Blood* 102:2562-2567, 2003
- Barwick BG, Neri P, Bahlis NJ, et al: Multiple myeloma immunoglobulin lambda translocations portend poor prognosis. *Nat Commun* 10:1911, 2019
- Bhalla S, Melnekoff DT, Aleman A, et al: Patient similarity network of newly diagnosed multiple myeloma identifies patient subgroups with distinct genetic features and clinical implications. *Sci Adv* 7:eabg9551, 2021
- Samur MK, Aktas Samur A, Fulciniti M, et al: Genome-wide somatic alterations in multiple myeloma reveal a superior outcome group. *J Clin Oncol* 38:3107-3118, 2020
- Ziccheddu B, Da Via MC, Lionetti M, et al: Functional impact of genomic complexity on the transcriptome of multiple myeloma. *Clin Cancer Res* 27:6479-6490, 2021
- Chavan SS, He J, Tytarenko R, et al: Bi-allelic inactivation is more prevalent at relapse in multiple myeloma, identifying RB1 as an independent prognostic marker. *Blood Cancer J* 7:e535, 2017
- Schavgoulidze A, Talbot A, Perrot A, et al: Biallelic deletion of 1p32 defines ultra-high-risk myeloma, but monoallelic del(1p32) remains a strong prognostic factor. *Blood* 141:1308-1315, 2023
- Steele CD, Abbasi A, Islam SMA, et al: Signatures of copy number alterations in human cancer. *Nature* 606:984-991, 2022
- Rustad EH, Nadeu F, Angelopoulos N, et al: mmsig: A fitting approach to accurately identify somatic mutational signatures in hematological malignancies. *Commun Biol* 4:424, 2021
- Walker BA, Wardell CP, Murison A, et al: APOBEC family mutational signatures are associated with poor prognosis translocations in multiple myeloma. *Nat Commun* 6:6997, 2015
- Broyl A, Hose D, Lokhorst H, et al: Gene expression profiling for molecular classification of multiple myeloma in newly diagnosed patients. *Blood* 116:2543-2553, 2010
- Zhan F, Hardin J, Kordsmeier B, et al: Global gene expression profiling of multiple myeloma, monoclonal gammopathy of undetermined significance, and normal bone marrow plasma cells. *Blood* 99:1745-1757, 2002
- Agnelli L, Biccato S, Mattioli M, et al: Molecular classification of multiple myeloma: A distinct transcriptional profile characterizes patients expressing CCND1 and negative for 14q32 translocations. *J Clin Oncol* 23:7296-7306, 2005
- Chesi M, Stein CK, Garbitt VM, et al: Monosomic loss of MIR15A/MIR16-1 is a driver of multiple myeloma proliferation and disease progression. *Blood Cancer Discov* 1:68-81, 2020
- Kvamme H, Borgan Ø, Scheel I: Time-to-event prediction with neural networks and Cox regression. *J Mach Learn Res* 20:1-30, 2019

38. Attal M, Lauwers-Cances V, Hulin C, et al: Lenalidomide, bortezomib, and dexamethasone with transplantation for myeloma. *N Engl J Med* 376:1311-1320, 2017
  39. McCarthy PL, Holstein SA, Petrucci MT, et al: Lenalidomide maintenance after autologous stem-cell transplantation in newly diagnosed multiple myeloma: A meta-analysis. *J Clin Oncol* 35:3279-3289, 2017
  40. Palumbo A, Cavallo F, Gay F, et al: Autologous transplantation and maintenance therapy in multiple myeloma. *N Engl J Med* 371:895-905, 2014
  41. Palumbo A, Gay F, Cavallo F, et al: Continuous therapy versus fixed duration of therapy in patients with newly diagnosed multiple myeloma. *J Clin Oncol* 33:3459-3466, 2015
  42. Richardson PG, Jacobus SJ, Weller EA, et al: Triplet therapy, transplantation, and maintenance until progression in myeloma. *N Engl J Med* 387:132-147, 2022
  43. Gerstung M, Papaemmanuil E, Martincorena I, et al: Precision oncology for acute myeloid leukemia using a knowledge bank approach. *Nat Genet* 49:332-340, 2017
  44. Individualized Risk Model for Myeloma: IRMMa Risk Calculator - User Guide. <https://irmma-risk-calculator.miami.edu/>
  45. Cavo M, Gay F, Beksac M, et al: Autologous haematopoietic stem-cell transplantation versus bortezomib-melphalan-prednisone, with or without bortezomib-lenalidomide-dexamethasone consolidation therapy, and lenalidomide maintenance for newly diagnosed multiple myeloma (EMN02/HO95): A multicentre, randomised, open-label, phase 3 study. *Lancet Haematol* 7:e456-e468, 2020
  46. Gay F, Musto P, Rota-Scalabrini D, et al: Carfilzomib with cyclophosphamide and dexamethasone or lenalidomide and dexamethasone plus autologous transplantation or carfilzomib plus lenalidomide and dexamethasone, followed by maintenance with carfilzomib plus lenalidomide or lenalidomide alone for patients with newly diagnosed multiple myeloma (FORTE): A randomised, open-label, phase 2 trial. *Lancet Oncol* 22:1705-1720, 2021
  47. Rasche L, Chavan SS, Stephens OW, et al: Spatial genomic heterogeneity in multiple myeloma revealed by multi-region sequencing. *Nat Commun* 8:268, 2017
  48. Rasche L, Schinke C, Maura F, et al: The spatio-temporal evolution of multiple myeloma from baseline to relapse-refractory states. *Nat Commun* 13:4517, 2022
-

**AUTHORS' DISCLOSURES OF POTENTIAL CONFLICTS OF INTEREST****Genomic Classification and Individualized Prognosis in Multiple Myeloma**

The following represents disclosure information provided by authors of this manuscript. All relationships are considered compensated unless otherwise noted. Relationships are self-held unless noted. I = Immediate Family Member, Inst = My Institution. Relationships may not relate to the subject matter of this manuscript. For more information about ASCO's conflict of interest policy, please refer to [www.asco.org/rwc](http://www.asco.org/rwc) or [ascopubs.org/jco/authors/author-center](http://ascopubs.org/jco/authors/author-center).

Open Payments is a public database containing information reported by companies about payments made to US-licensed physicians (Open Payments).

**Benjamin Diamond**

**Honoraria:** Sanofi, Janssen Research & Development  
**Consulting or Advisory Role:** Sanofi, Janssen Oncology

**Faith Davies**

**Employment:** University of Arkansas for Medical Sciences, NYU Langone Medical Center  
**Honoraria:** Amgen, Celgene, Takeda, Bristol Myers Squibb, AbbVie, Janssen Oncology, Oncopeptides, GlaxoSmithKline, Sanofi, Pfizer, Regeneron  
**Consulting or Advisory Role:** Celgene, Takeda, Amgen, Oncopeptides, Bristol Myers Squibb, Janssen Oncology, Sanofi, GlaxoSmithKline, AbbVie, Pfizer, Regeneron

**Brian Walker**

**Honoraria:** MMRF  
**Research Funding:** Genentech, Bristol Myers Squibb/Celgene

**Malin Hultcrantz**

**Consulting or Advisory Role:** Curio Science, Bristol Myers Squibb/Celgene, GlaxoSmithKline, Intellisphere, Projects in Knowledge  
**Research Funding:** Daiichi Sankyo (Inst), Amgen (Inst), GlaxoSmithKline (Inst)

**Ariosto Silva**

**Research Funding:** AbbVie, Karyopharm Therapeutics  
**Patents, Royalties, Other Intellectual Property:** US patent application 63/173,389 selinexor synergism in multiple myeloma, US patent application 63/301,507 a multiomic approach to modeling of gene regulatory networks in multiple myeloma

**Oliver Hampton**

**Employment:** Aster Insights

**Jamie K. Teer**

**Employment:** H. Lee Moffitt Cancer Center and Research Institute  
**Research Funding:** Turnstone Bio (Inst)  
**Patents, Royalties, Other Intellectual Property:** Patent application: large data set negative information storage model

**Niccolò Bolli**

**Honoraria:** Pfizer, Janssen Oncology, Amgen, GlaxoSmithKline, Jazz Pharmaceuticals, Takeda  
**Consulting or Advisory Role:** Janssen, Pfizer  
**Speakers' Bureau:** Celgene, Amgen

**Graham H. Jackson**

**Honoraria:** J&J, Sanofi, BMS, Takeda, Amgen, Pfizer, Dr. Reddy's Laboratories  
**Consulting or Advisory Role:** Oncopeptides, Janssen Oncology, Sanofi, Celgene, Takeda, Amgen  
**Research Funding:** Takeda, Bristol Myers Squibb/Celgene

**Martin Kaiser**

**Honoraria:** Takeda, Celgene, Amgen, Janssen Oncology, Sanofi  
**Consulting or Advisory Role:** Janssen Oncology, Celgene, Bristol Myers Squibb, Takeda, Amgen, AbbVie, GlaxoSmithKline, Seagen, Pfizer, Regeneron  
**Research Funding:** Celgene (Inst)  
**Travel, Accommodations, Expenses:** Takeda, Janssen, Bristol Myers Squibb/Celgene

**Charlotte Pawlyn**

**Honoraria:** Janssen Oncology, Sanofi, Celgene/Bristol Myers Squibb, AbbVie, GlaxoSmithKline  
**Consulting or Advisory Role:** Sanofi, Celgene/Bristol Myers Squibb, Janssen, ITeos Therapeutics (Inst), Pfizer (Inst)  
**Research Funding:** Janssen (Inst), Celgene/Bristol Myers Squibb (Inst)

**Gordon Cook**

**Honoraria:** Takeda, Janssen-Cilag, Celgene, Karyopharm Therapeutics, Bristol Myers Squibb, Amgen, Oncopeptides  
**Consulting or Advisory Role:** Janssen, Bristol Myers Squibb, Amgen, Takeda, Karyopharm Therapeutics, Oncopeptides  
**Speakers' Bureau:** Takeda, Janssen-Cilag, Amgen, Jazz Pharmaceuticals, Takeda  
**Research Funding:** Takeda (Inst), Celgene (Inst)  
**Travel, Accommodations, Expenses:** Takeda

**Dickran Kazandjian**

**Employment:** University of Miami Hospitals and Clinics  
**Honoraria:** Arcellx, BMS, Sanofi, MJH Life Sciences, Curio Science, Aptitude Health, Multiple Myeloma Research Foundation, Florida Society of Clinical Oncology, Plexus  
**Consulting or Advisory Role:** Alphasights, Bridger Consulting Group, Aperture Medical Technology, LLC, Arcellx  
**Speakers' Bureau:** Karyopharm Therapeutics

**Marta Chesi**

**Employment:** Mayo Clinic  
**Honoraria:** Genentech, Novartis, Pfizer  
**Research Funding:** Pfizer  
**Patents, Royalties, Other Intellectual Property:** Receive Royalties for distribution of Vk\*MYC and hCRBN mice and transplantable lines

**Leif Bergsagel**

**Consulting or Advisory Role:** Janssen, Mundipharma, Salaris Pharmaceuticals, CellCentric  
**Research Funding:** Pfizer  
**Patents, Royalties, Other Intellectual Property:** Mouse model of multiple myeloma  
**Travel, Accommodations, Expenses:** Celgene  
**Open Payments Link:** <https://openpaymentsdata.cms.gov/physician/59882>

**Elias K. Mai**

**Honoraria:** Janssen, Takeda, Bristol Myers Squibb/Celgene, Sanofi, GlaxoSmithKline, Stemline Therapeutics  
**Consulting or Advisory Role:** Janssen, Bristol Myers Squibb/Celgene, Takeda, Sanofi, GlaxoSmithKline, Stemline Therapeutics  
**Research Funding:** Janssen, Bristol Myers Squibb/Celgene, Takeda, Sanofi, GlaxoSmithKline  
**Travel, Accommodations, Expenses:** Janssen, Bristol Myers Squibb/Celgene, Takeda, GlaxoSmithKline, Sanofi, Stemline Therapeutics

**Hartmut Goldschmidt**

**Honoraria:** Janssen-Cilag, Novartis, Bristol Myers Squibb, Chugai Pharma, Sanofi, Amgen, GlaxoSmithKline, Pfizer  
**Consulting or Advisory Role:** Janssen-Cilag (Inst), Bristol Myers Squibb (Inst), Amgen (Inst), Adaptive Biotechnologies (Inst), Sanofi (Inst)  
**Research Funding:** Bristol Myers Squibb (Inst), Janssen (Inst), Novartis (Inst), Celgene (Inst), Amgen (Inst), Sanofi (Inst), Takeda (Inst), Molecular Partners (Inst), MSD (Inst), Incyte (Inst), GlycoMimetics Inc (Inst), GlaxoSmithKline (Inst), Heidelberg Pharma (Inst), Roche (Inst), Karyopharm Therapeutics (Inst), Millenium Pharmaceuticals (Inst), MorphoSys (Inst), Pfizer (Inst)  
**Travel, Accommodations, Expenses:** Janssen-Cilag, Sanofi, Amgen, Bristol Myers Squibb/Celgene, GlaxoSmithKline, Novartis, Pfizer  
**Other Relationship:** Amgen (Inst), Celgene/Bristol Myers Squibb (Inst), Chugai Pharma Europe (Inst), Janssen (Inst), Sanofi (Inst), Mundipharma (Inst), Array BioPharma/Pfizer (Inst)

**Katja C. Weisel**

**Honoraria:** Amgen, Bristol Myers Squibb, Janssen-Cilag, GlaxoSmithKline, Adaptive Biotechnologies, Karyopharm Therapeutics, Takeda, Sanofi, AbbVie, GlaxoSmithKline, Novartis, Pfizer, Celgene, Janssen (Inst), Oncopeptides, Roche, Menarini  
**Consulting or Advisory Role:** Amgen, Adaptive Biotechnologies, Bristol Myers Squibb, Celgene, GlaxoSmithKline, Janssen-Cilag, Karyopharm Therapeutics, Sanofi, Takeda, Oncopeptides, Roche, Menarini  
**Research Funding:** Amgen (Inst), Celgene (Inst), Sanofi (Inst), Janssen-Cilag (Inst), Bristol Myers Squibb/Celgene (Inst), GlaxoSmithKline (Inst), AbbVie (Inst)  
**Travel, Accommodations, Expenses:** Amgen, Celgene, Bristol Myers Squibb, Janssen-Cilag, GlaxoSmithKline, Takeda, Menarini

**Roland Fenk**

**Honoraria:** BMS/Celgene, Janssen, Sanofi, GlaxoSmithKline  
**Consulting or Advisory Role:** Janssen, BMS/Celgene, GlaxoSmithKline  
**Travel, Accommodations, Expenses:** Janssen, BMS/Celgene, GlaxoSmithKline

**Marc S. Raab**

**Honoraria:** AbbVie, Bristol Myers Squibb/Celgene  
**Consulting or Advisory Role:** Bristol Myers Squibb/Celgene (Inst), Amgen (Inst), GlaxoSmithKline (Inst), Janssen (Inst), Sanofi (Inst), Pfizer (Inst)  
**Research Funding:** Bristol Myers Squibb/Celgene (Inst), Janssen (Inst), Sanofi (Inst)  
**Travel, Accommodations, Expenses:** AbbVie, Bristol Myers Squibb/Celgene, GlaxoSmithKline, Amgen, Janssen, Sanofi, Pfizer

**Fritz Van Rhee**

**Consulting or Advisory Role:** GlaxoSmithKline, Janssen Biotech, Takeda, Sanofi, Celgene

**Saad Usmani**

**Consulting or Advisory Role:** Celgene, Amgen, Janssen Oncology, Takeda, GlaxoSmithKline, Karyopharm Therapeutics, AbbVie, Merck, Genentech, Gilead Sciences, Bristol Myers Squibb/Celgene  
**Research Funding:** Celgene, Array BioPharma, Janssen Oncology, Pharmacyclics, Sanofi, Bristol Myers Squibb, Amgen, Seagen, Merck, Skyline Diagnostics, GlaxoSmithKline

**Kenneth H. Shain**

**Honoraria:** Bristol Myers Squibb (Celgene), Janssen Oncology, Amgen, GlaxoSmithKline, Sanofi, Takeda, Karyopharm Therapeutics  
**Consulting or Advisory Role:** GlaxoSmithKline, Adaptive Biotechnologies, Janssen Oncology  
**Speakers' Bureau:** Bristol Myers Squibb/Celgene, Janssen Oncology, Amgen, Sanofi, GlaxoSmithKline, Takeda, Adaptive Biotechnologies  
**Research Funding:** AbbVie, Karyopharm Therapeutics

**Niels Weinhold**

**Honoraria:** GlaxoSmithKline  
**Consulting or Advisory Role:** Sanofi  
**Research Funding:** Celgene/Bristol Myers Squibb

**Gareth Morgan**

**Honoraria:** BMS, Janssen, Genentech, Sanofi, Karyopharm Therapeutics, Takeda  
**Consulting or Advisory Role:** Takeda, GlaxoSmithKline  
**Travel, Accommodations, Expenses:** BMS, Janssen

**Ola Landgren**

**Honoraria:** Celgene, Bristol Myers Squibb, Medscape, Amgen, Janssen, Karyopharm Therapeutics, GlaxoSmithKline  
**Consulting or Advisory Role:** Bristol Myers Squibb, Celgene, Janssen, GlaxoSmithKline  
**Research Funding:** Amgen (Inst), Janssen (Inst), Pfizer (Inst)

No other potential conflicts of interest were reported.